

LIQUID RING VACUUM PUMP

Atlas Copco

AWD 200-4510



Within Atlas Copco's full range of liquid ring vacuum pumps, the AWD offers a two-stage construction for peak performance at low suction pressures

Atlas Copco liquid ring pumps are ideal for pumping either dry or wet gasses, with a high tolerance to liquid carryover, especially on condensable processes. Pumps are available in a variety of materials which can be selected to suit the pumped process media. All AWD liquid ring pumps are available as part of standard pre-configured modules manufactured according to

Atlas Copco design principles for easy installation, use and service. AWD two stage liquid ring vacuum pumps are created for extreme reliability and are ideal for continuous general industry vacuum service below 200 mbara, particularly vacuum distillation, drying, degassing and evaporator duties.

FEATURES AND BENEFITS

- Two stage design - peak efficiency at high vacuum.
- Operates across entire vacuum range.
- Mechanical shaft seals.
- Choice of construction materials.
- Rugged, robust construction.
- Minimum number of body joints.
- Externally mounted bearings.

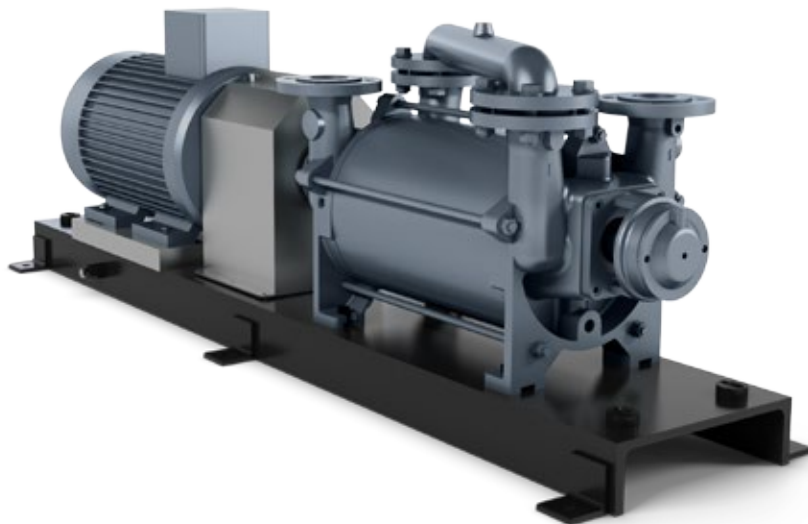
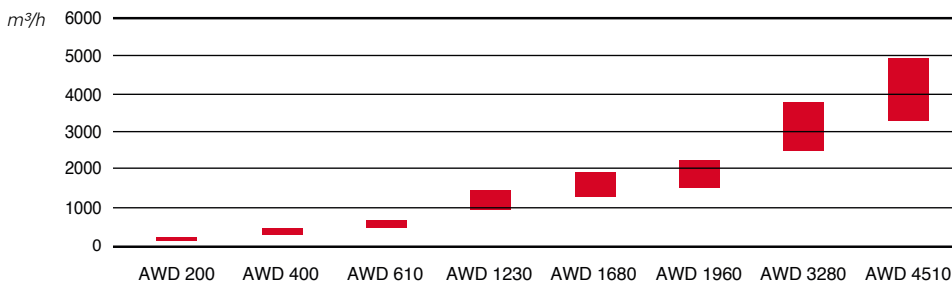
MATERIALS OF CONSTRUCTION

	Cast iron	Stainless steel	Stainless steel fitted
Casing	Cast iron	316 stainless steel	Cast iron
Body	Cast iron	316 stainless steel	Cast iron
Impeller	SG iron	316 stainless steel	316 stainless steel
Shaft	420 stainless steel	316 stainless steel	316 stainless steel
Mechanical seals	SiC/C/Viton	SiC/C/Viton	SiC/C/Viton

TECHNICAL SPECIFICATIONS

	AWD 200	AWD 400	AWD 610	AWD 1230	AWD 1680	AWD 1960	AWD 3280	AWD 4510
50 Hz								
Nominal capacity (m ³ /h)	195	400	610	1250	1685	2000	3300	4500
Ultimate pressure (mbar(a))	30	30	30	30	30	30	30	30
Nominal installer motor (kW)	5.5	11	22	45	55	75	110	132
Approximate block dimensions (W x D x H) (mm)	722 x 280 x 457	873 x 280 x 457	987 x 340 x 568	1279 x 480 x 774	1379 x 480 x 774	1710 x 650 x 1034	2004 x 650 x 1034	2216 x 800 x 1301
Dry weight (kg)	90	160	222	584	760	1180	1680	2635
60 Hz								
Nominal capacity (cfm)	126	283	412	853	1130	1324	2207	2884
Ultimate pressure (torr)	25	25	25	25	25	25	25	25
Nominal installer motor (hp)	10	20	40	75	100	125	175	200
Approximate block dimensions (W x D x H) (inch)	28 x 11 x 18	34 x 11 x 18	39 x 13 x 22	50 x 19 x 30	54 x 19 x 30	67 x 26 x 41	79 x 26 x 41	87 x 31 x 51
Dry weight (lbs)	198	353	485	1287	1676	2601	3704	5809

PERFORMANCE RANGE



AWD pumps are available as bareshaft 'Blocks', motorized 'Powerpacks', or standard pre-configured water recycle modules. Please refer to the TR Module brochure for further details.



ISO 9001 • ISO 14001
OHSAS 18001



www.atlascopco.com/vacuum